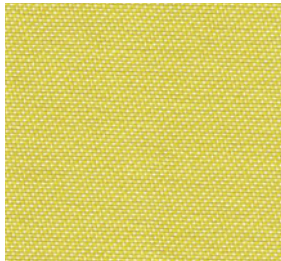


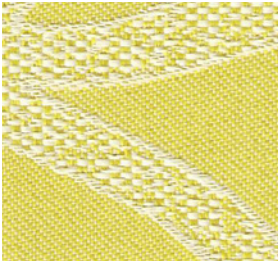


mahATN
creative cover materials
since 1810

IN- & OUTDOOR
OMIKRON
STOFFE / FABRICS



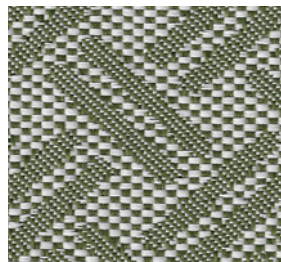
048 x 713



048 x 113



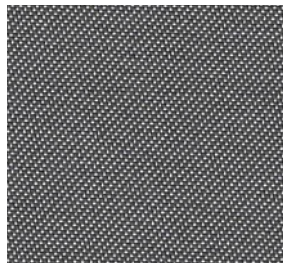
048 x 640



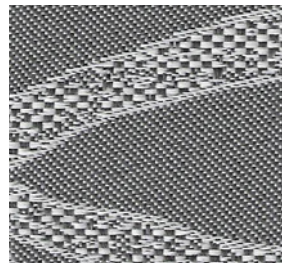
048 x 547



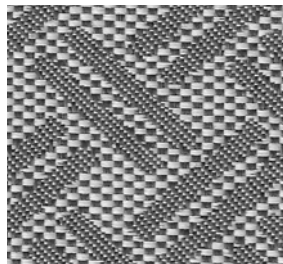
048 x 747



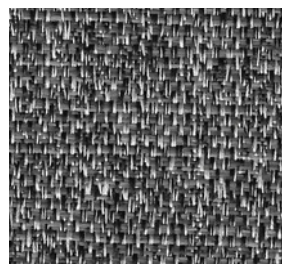
048 x 708



048 x 108



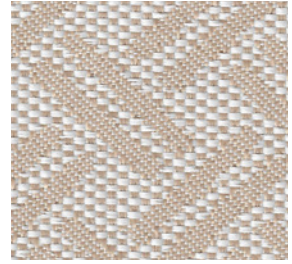
048 x 508



048 x 659



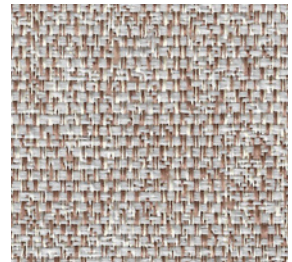
048 x 154



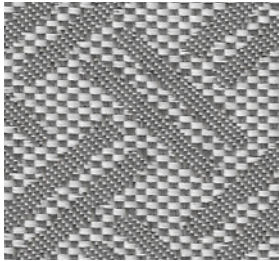
048 x 554



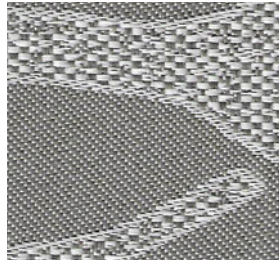
048 x 754



048 x 652



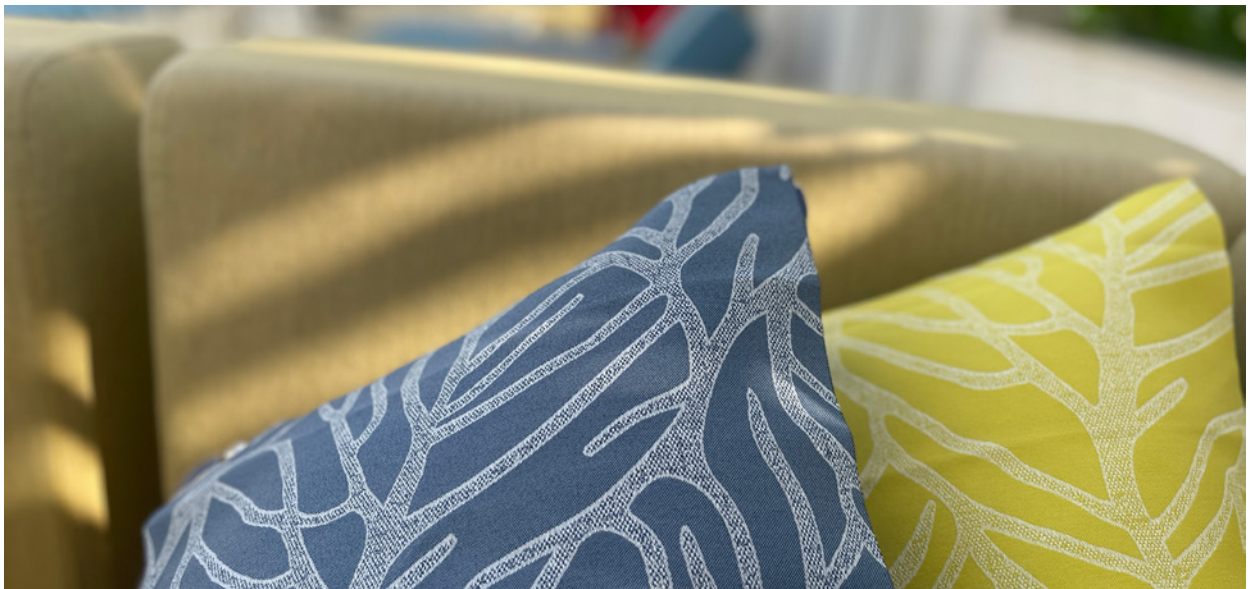
048 x 556

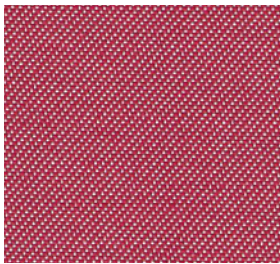


048 x 156

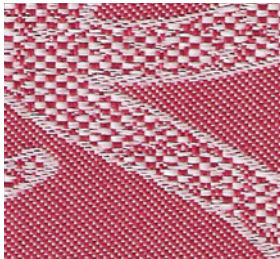


048 x 758





048 x 727



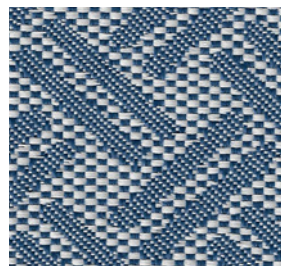
048 x 127



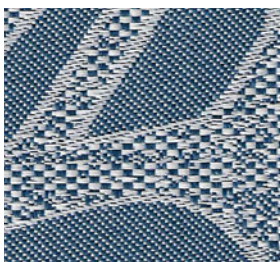
048 x 750



048 x 735

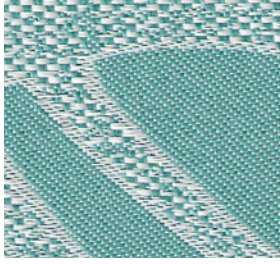


048 x 535



048 x 135

OMIKRON



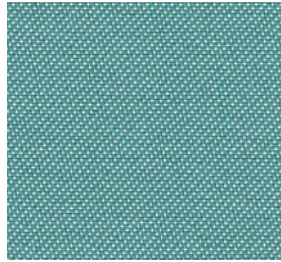
048 x 136



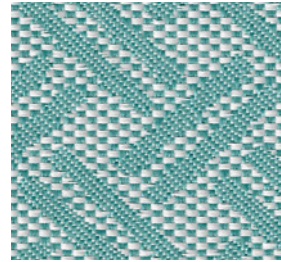
048 x 151



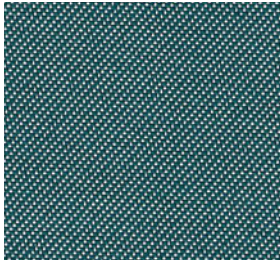
048 x 551



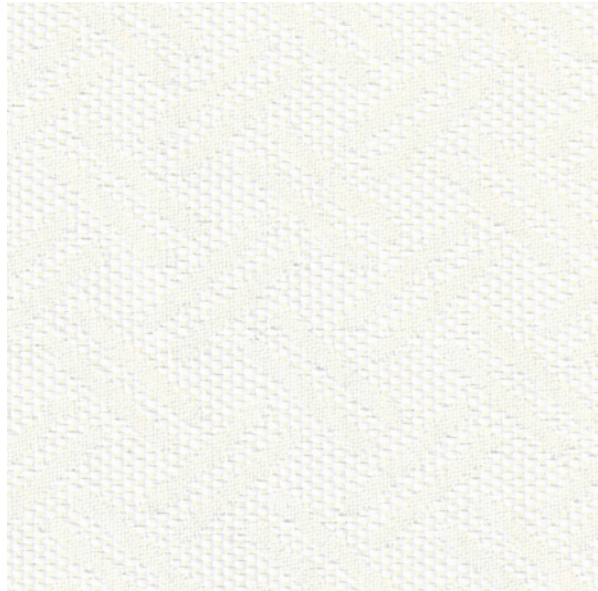
048 x 736



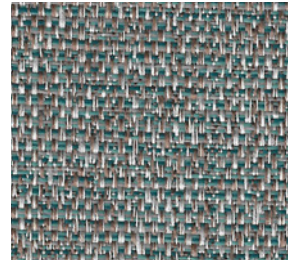
048 x 536



048 x 737



048 x 551



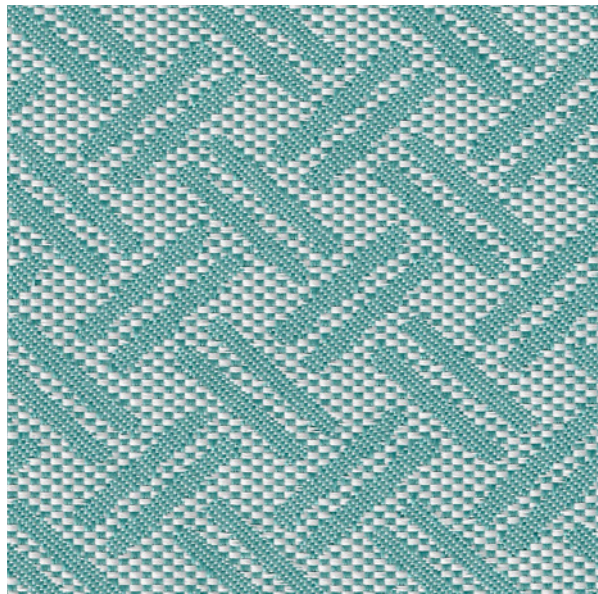
048 x 636



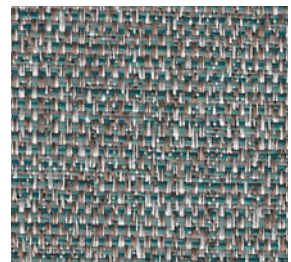
048 x 736



048 x 737



048 x 536



048 x 636



IN- & OUTDOOR STOFFE, FABRICS, TISSUS OMIKRON 048x...



Produktspezifikation	Gewicht / Breite	236 g/m ² / 140 cm
	Zusammensetzung	58 % R-PET; 42 % PES
	Scheuerfestigkeit	DIN EN ISO 12947-2 > 50.000 Zyklen Martindale (stark beanspruchbar)
	Lichtechtheit	DIN EN ISO 105 - B 02 7-8 (sehr hoch)
	Reibechtheit	DIN EN ISO 105 trocken 5, nass 5 (sehr hoch)
	Pillingprüfung	DIN EN ISO 12945-2 Note 5 (keine Veränderung)
	Chlorbadewasserechtheit	DIN EN ISO 105-E03 Note 4 (hoch)
	Meerwasserchtheit	DIN EN ISO 105-E02 Note 4-5 (sehr hoch)
	Eigenschaften	stark wasserabweisend, stark ölabweisend, Nahtverschiebefestigkeit sehr hoch, antibakteriell
	Waschanleitung	

Alle Informationen: Änderungen und Irrtum vorbehalten. Chargenbedingte Farbabweichungen sind möglich.



Product-specifications	Weight / Width	236 g/m ² / 140 cm
	Composition	58 % R-PET; 42 % PES
	Abrasion Resistance	DIN EN ISO 12947-2 > 50.000 cycles Martindale (fortement sollicitable)
	Lightfastness	DIN EN ISO 105 - B 02 7-8 (très élevée)
	Rubbing Fastness	DIN EN ISO 105 à sec 5, à l'humide 5 (très élevée)
	Pilling Test	DIN EN ISO 12945-2 Note 5 (aucun changement)
	Chlorine Pool Water Fastness	DIN EN ISO 105-E03 Note 4 (élevée)
	Seawater Fastness	DIN EN ISO 105-E02 Note 4-5 (très élevée)
	Properties	hautement déperlant, hautement oléofuge résistance très élevée au glissement des coutures, antibactérien
	Washing Instructions	

All information: subject to change and error. Consider colour differences between production lots.



Spécifications du produit	Poids / Largeur	236 g/m ² / 140 cm
	Composition	58 % R-PET; 42 % PES
	Résistance à l'abrasion	DIN EN ISO 12947-2 > 50.000 cycles Martindale (fortement sollicitable)
	Solidité à la lumière	DIN EN ISO 105 - B 02 7-8 (très élevée)
	Solidité au frottement	DIN EN ISO 105 à sec 5, à l'humide 5 (très élevée)
	Test de boulochage	DIN EN ISO 12945-2 Note 5 (aucun changement)
	Solidité à l'eau chlorée	DIN EN ISO 105-E03 Note 4 (élevée)
	Solidité à l'eau de mer	DIN EN ISO 105-E02 Note 4-5 (très élevée)
	Propriétés	hautement déperlant, hautement oléofuge résistance très élevée au glissement des coutures, antibactérien
	Instructions de lavage	

Toutes les informations : sous réserve de modifications et d'erreurs. Des variations de couleur dues aux lots sont possibles.

