



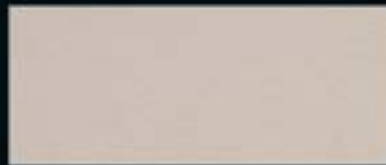
Polsterleder *Upholstery Leather*



**Prima Nappa +
Modulsystem
Prima **TEC****



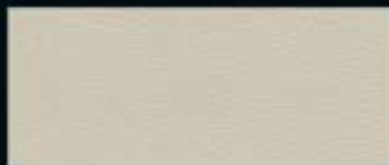
1392 weiß



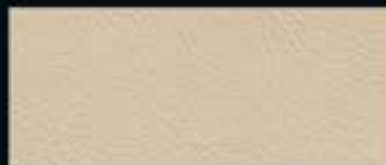
0590BN linen



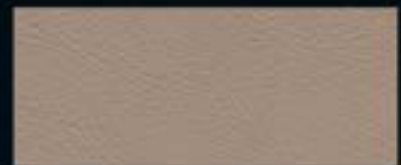
1373 oak



6657BN bianco polar



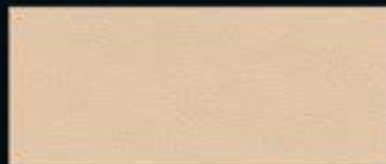
1368 marble



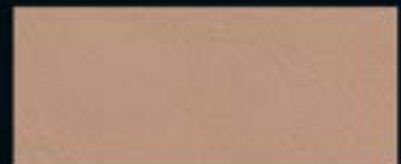
1425 clay



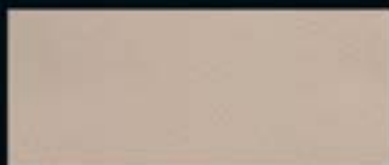
1352 lotosweiß



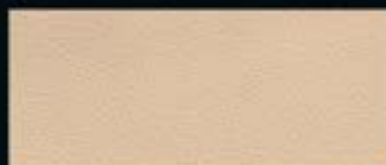
0813BN magnolia



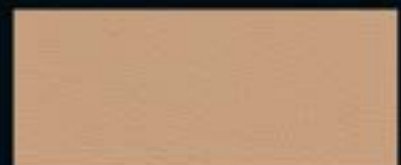
1366 desert



1353 kiesel



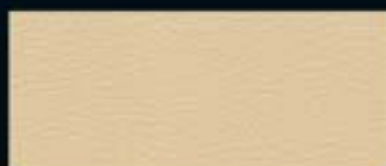
3997BN crema



0571BN saffron



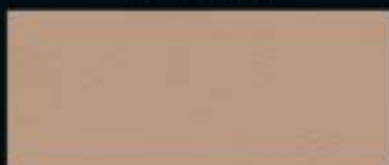
1390 crema



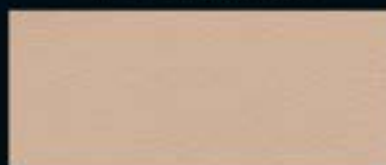
1356 champagner



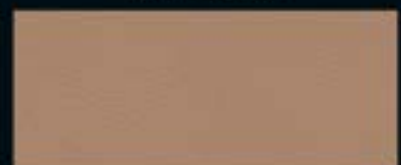
1430 tauger



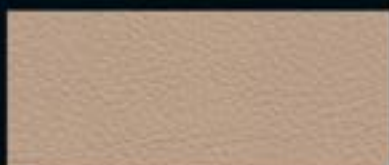
1385 brittle



1369 sesame



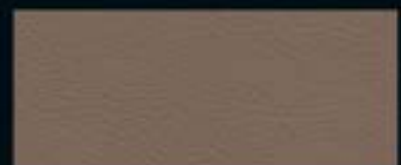
1431 bengasi



1384 sandbeige/java



1386 cremeweiß



1432 helios mittel



1383 beige



0424BN beige tradizione



1262BN english tan



1185BN camel



4609BN cuoio



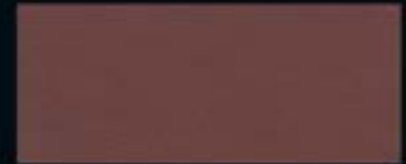
0926BN dark bourbon



4208BN beige moderno



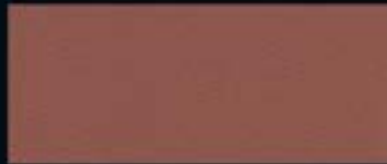
0589BN new market tan



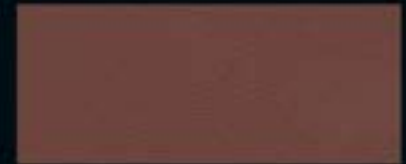
1361 kastanienbraun



1387 modena



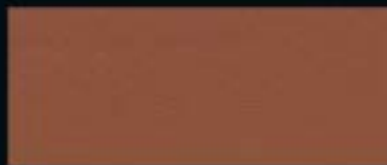
1453 sienabraun



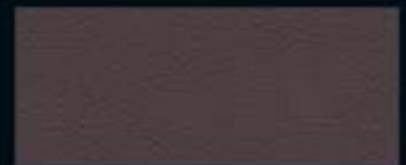
1452 tartufo



0708BN autumn



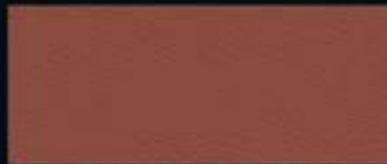
1391 zimt



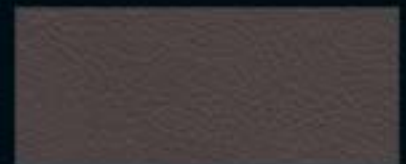
1433 dattelbraun



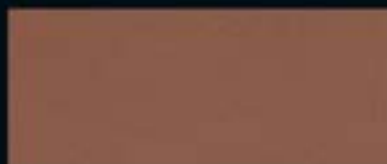
1426 peat



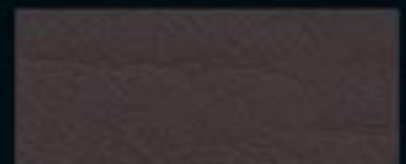
1427 english tan



1429 dark mocca



0572BN saddle



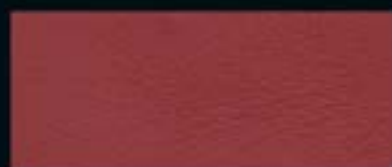
1362 brasil



1363 powder



1394 poppy



1049BN hotspur



1381 apricot



1804 flashred



1380 klassischrot



1395 lava



1393 cherry



9619BN rosso rea dk



1388 flamingo



1364 mugellorot



4481BN bordeaux



6663BN arancio dryope



1389 sportrot



0574BN fireglow



6832BN rosso alala



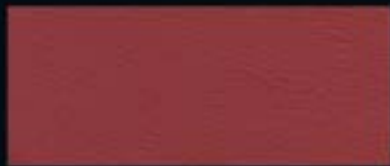
1365 trinidadrot



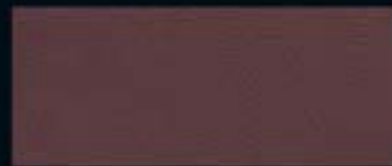
1367 karmesinrot



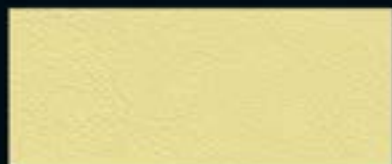
0421BN rosso



1354 rot



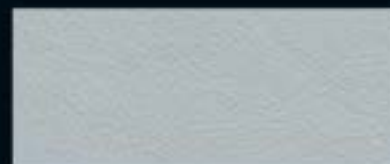
1359 redwood



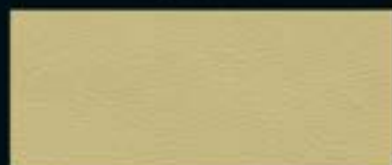
1375 lime



1415 gravel



1414 white blue



1377 mustard



1419 kieselgrau



1402 ice



1410 kiwi



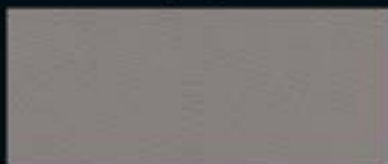
0591BN pergament hell



1401 sky



9504BN new verde



1421 cinder



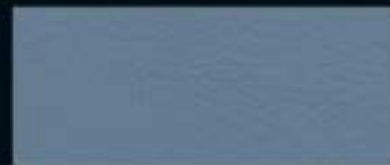
1399 heaven



1411 pea



1422 basalt



1396 atlantic



1412 nephrite green



1420 tartufo hell



1400 lagoon



1413 steppe



1454 pool green



4753BN blu glauco



1404 dove



1407 denim



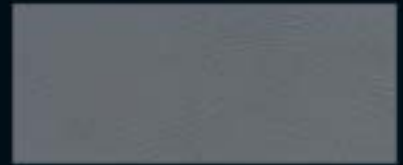
1416 seagull



1405 steelblue



1156BN french navy



1360 oriongrau mittel



9259BN blue amon



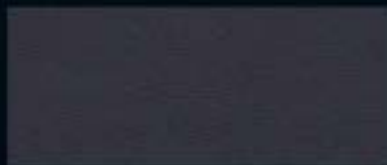
1052BN nauticblue



1406 pazifikblau



1397 santorinblau



1370 ultramarin



1434 graublau



1371 tobagoblau



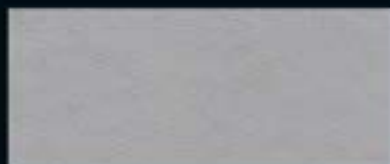
1408 mauritiusblau



1409 royalblau



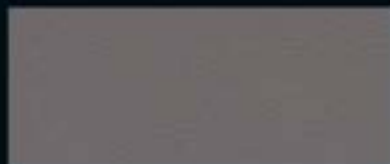
Kollektionsmuster sind keine Urmuster. Kleine Farbabweichungen sind möglich.
Swatches are no master samples. Small differences may occur.



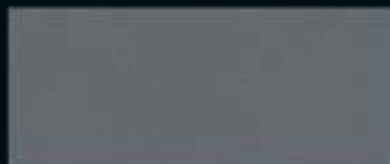
1355 silbergrau hell



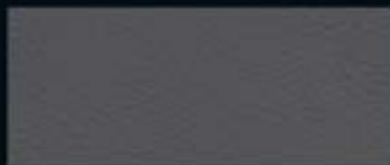
1357 silbergrau



1423 muschel



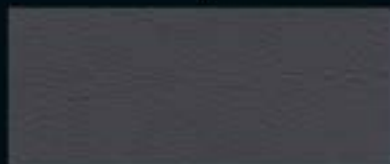
1417 granitgrau dunkel



1424 verkehrsgrau



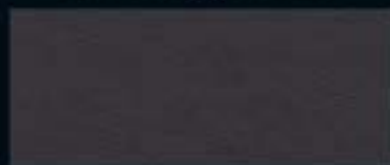
1358 silbergrau dunkel



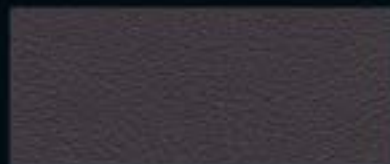
1418 grigio sirius



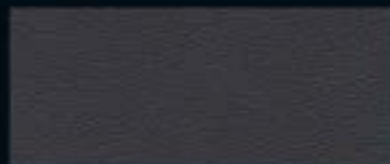
7612BN grigio octans



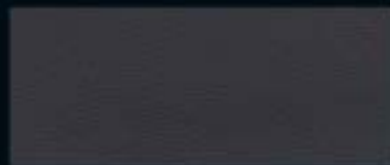
1382 anthrazit hell



0593BN burnt oak



1051BN beluga black



8500BN nero



6486BN nero ade



1351 schwarz



Schiffe: Für Ausstattungen von Segelschiffen, Yachten bis zu Ozeanriesen. Wenn ein IMO-Zertifikat benötigt wird, bitte auf Kennzeichnung der Häute hinweisen.

Marine: For all marine upholstered fixtures and fitting needs from pleasure craft to ocean liners. IMO certification on the hides available on request.

IMO A.652 (8)



Automobile: Der Artikel Prima Nappa ist vollumfänglich einsetzbar für den Automobilbereich.

Automotive: Refurbishment of vehicles.

ECE R 118.02 Annex 6 und 7 (DIN 75200 / FMVSS 302)



Flugzeuge: Linienmaschine, Privatjet oder Sportmaschine. Nähere Einzelheiten erhalten Sie auf Anfrage.

Aviation: Commercial passenger aircraft, private jets and sporting aircraft. International and Federal Aviation requirements met or exceeded.

(Anfertigung ab 30 Häuten) FAR 25.853 a) und b)



Objektbereich: Polstermöbel für Lobbies, Bestuhlungen für Konzertsäle und Konferenzräume, Tür- und Wandbespannungen und vieles mehr...

Contract furnishing: For all contract upholstery purposes including public lobbies, concert halls, conference rooms. Also for door and wall covering needs.

**DIN EN 1021 1 und 2
California 117**

Einige Tests werden im Verbund mit Schaum, Vlies etc. durchgeführt. Änderungen des Aufbaus des Polstermöbels bedürfen einer erneuten Prüfung.

Several of these tests are in composite form, made together with foam, woven and non woven fleece. Changes of combinations may require additional testing.

PRIMA NAPPA

- | Narben korrigiert
- | *grain corrected*

Technische Werte/ <i>technical specifications</i>	Meßmethode/ <i>test methods</i>	Werte/ <i>values</i>
Stärke/ <i>strength</i>	DIN 53326	1,0 mm - 1,4 mm
Flächengewicht/ <i>mass per unit area</i>	DIN 53327	620 - 980 g/qm
Dehnungsprüfung/ <i>tension test</i> Höchstzugkraft/ <i>tensile test</i> Bruchdehnung/ <i>breaking elongation</i>	DIN 53328 Probekörper 2/ <i>specimen 2</i> Probekörper 2/ <i>specimen 2</i>	> 120 N 35 - 70 %
Weiterreißkraft/ <i>tear strength</i> längs/ <i>length</i> quer/ <i>across</i>	DIN 53329/A DIN 53329/B	> 25 N > 20 N
Dauerknickverhalten/ <i>flexion</i> längs/ <i>length</i> quer/ <i>across</i>	DIN 53351	20.000 Knickungen/ <i>flexes</i> : keine Rissbildung bei 6-facher Vergrößerung/ <i>no cracks at 6 times magnifying</i>
Dauerverhalten nach 1 Zyklus belichten/ <i>flexion after aging 1 period</i>		10.000 Knickungen/ <i>flexes</i> : keine Rissbildung bei 6-facher Vergrößerung/ <i>no cracks at 6 times magnifying</i>
Wasserdampfdurchlässigkeit/ <i>water vapour permeability</i>	DIN 53333	1,0 mg/qcm
Reibechtheit/ <i>rub fastness</i> trocken/ <i>dry</i> nass/ <i>wet</i> nass nach Wasserlagerung/ <i>wet after storage in water</i>	DIN EN ISO 11640	4 - 5 Note/class 4 - 5 Note/class 4 - 5 Note/class
Schweißbläsung/ <i>sweat</i>		4 - 5 Note/class
Haftung der Zurichtung/ <i>topcoat adhesion</i>		3,5 N/cm
Heißlichtechtheit/ <i>hotlight fastness</i>	DIN 75202	5 - 7 Stufe Blauskala/ <i>class blue scale</i>
Brennprüfung/ <i>flammability</i>	FMVSS 302	< 100 mm/min
Geruchsprüfung/ <i>smelling test</i>	VDA 270 C3	< 3 Note/class

Kollektionsmuster sind keine Urmuster. Kleine Farbabweichungen sind möglich.
Swatches are no master samples. Small differences may occur.

Prima Nappa + Modulsystem

Prima **TEC I**

Zusätzlicher Flammschutz wahlweise für:

- | Flugzeuge FAR 25.853 a + b
- | Objektbereich:
B1, B2, EMPA (5.3), BS 5852 (1990) crib 5
- | andere auf Anfrage

TEC I

additional flame protection alternatively for:

- | *airplane FAR 25.853 a+b*
- | *contract furnishing:*
B1, B2, EMPA (5.3), BS 5852 (1990) crib 5
- | *others upon request*

**Lieferzeiten/
time of delivery**

Prima Nappa

TEC I

Mindestmenge/
minimum order

ab 0,5 Haut/from 0,5 hides

Auf Anfrage/on request

Lieferzeit Tage/
time of delivery days

sofort/immediately

Auf Anfrage/on request



Hans Reinke
Handelsgesellschaft mbH

Brandstücken 20 Tel. +49 40 39 10 68-0
22549 Hamburg Fax +49 40 39 10 68-29
info@hans-reinke.com www.hans-reinke.com

NETHERLANDS, BELGIUM & LUXEMBOURG



Hans Reinke Benelux B.V.

Buksumweg 2A Tel. +31 13 505 6702
5081 CT Hilvarenbeek Fax +31 13 505 3073
Netherlands info@hans-reinke.nl

SWITZERLAND, AUSTRIA & FRANCE



Jörg & Reinke GmbH

Schärtschachen 809d Tel. +41 34 402 5005
CH-3562 Fax +41 34 402 55 53
Bärau info@joerg-leder.ch

POLAND



Automotive Textiles

Jakub Ponczyński Tel. +48 42 288 10 10
93-490 Łódź Mob. +48 513 014 610
Pabianicka 119/131 jakub@ponczynski.com