



mahATN
creative cover materials
since 1810

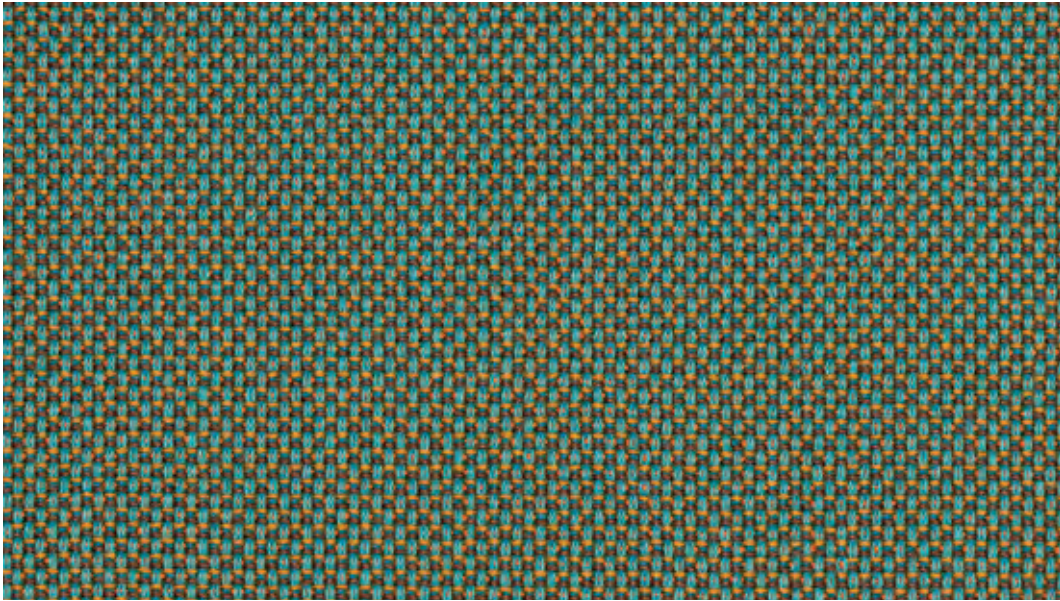
STOFFE / FABRICS

BREEZE FUSION

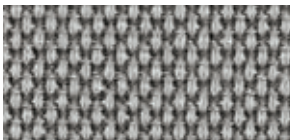
845x

WOLLE | WOOL

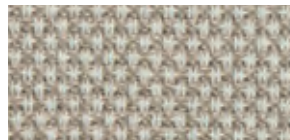
BREEZE FUSION



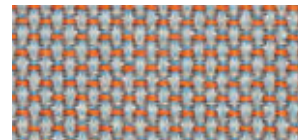
845 x 4870



845 x 4003



845 x 4104



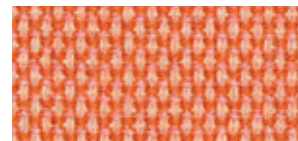
845 x 4301



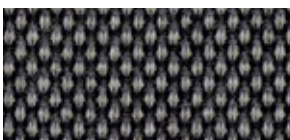
845 x 4103



845 x 4102



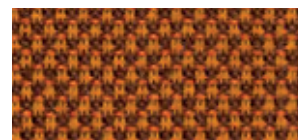
845 x 4303



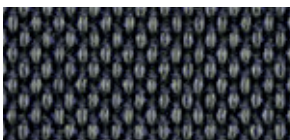
845 x 4001



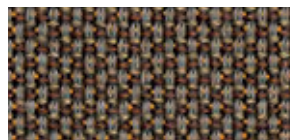
845 x 4002



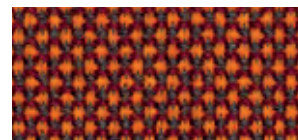
845 x 4820



845 x 4936



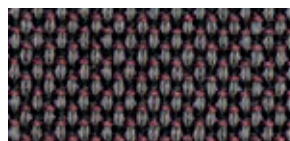
845 x 4931



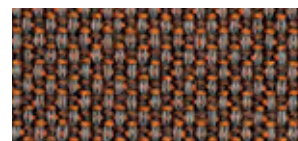
845 x 4302



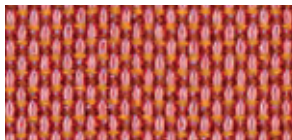
845 x 4004



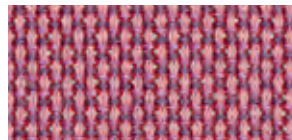
845 x 4938



845 x 4930



845 x 4810



845 x 4811



845 x 4601



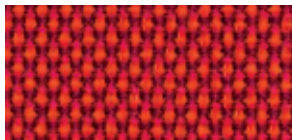
845 x 4805



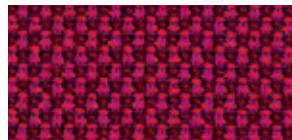
845 x 4910



845 x 4602



845 x 4401



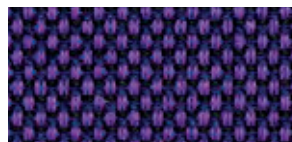
845 x 4920



845 x 4604



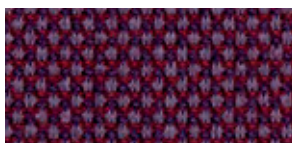
845 x 4402



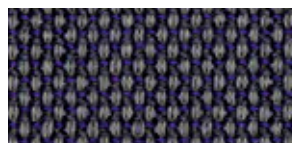
845 x 4900



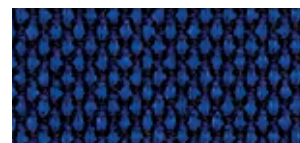
845 x 4890



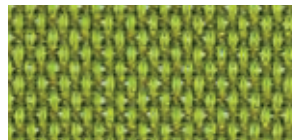
845 x 4501



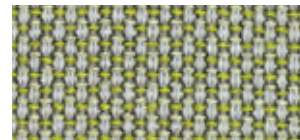
845 x 4937



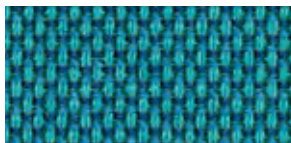
845 x 4880



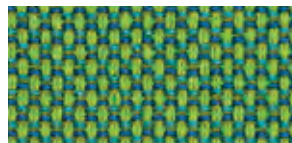
845 x 4840



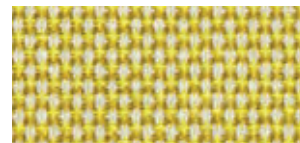
845 x 4804



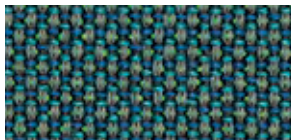
845 x 4871



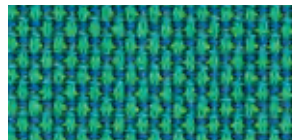
845 x 4841



845 x 4202



845 x 4933



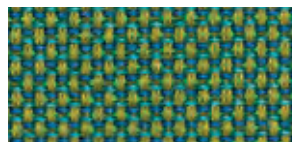
845 x 4860



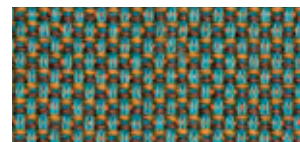
845 x 4830



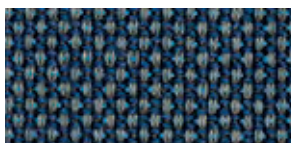
845 x 4934



845 x 4851



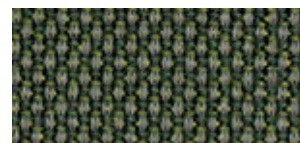
845 x 4870



845 x 4935



845 x 4850




845 x 4932

BREEZE FUSION 845x...

		
Produktspezifikation	Verwendungsbereich	Objektqualität
	Material	88 % New Zealand Wool / 12 % Polyamid
	Gewicht	590 g/m
	Breite	140 cm
	Scheuerfestigkeit	100.000 Scheuertouren: EN ISO 12947-2 (Martindale)
	Pilling	4-5 Skala: 1-5, Max. 5 - EN ISO 12945-2
	Lichtechtheit	5-7 Skala: 1-8, Max. 8 - EN ISO 105 - B02
	Reibechtheit	4-5/4-5 Skala: 1-5, Max. 5 - EN ISO 105x12 (nass/trocken)
	Reinigung	Chemische Reinigung ☉
	Flammhemmende Ausrüstung	BS 5852 Part 1 - 0 & 1 • BS EN 1021 - 1 & 2 • CA TB 117-2013 • Class Uno UNI 9175 Class 1 EMME • AM 18 • NF D 60-013. Erfüllt auch andere Feuertests. Schwerentflammbarkeit hängt vom verwendeten Schaum und der schwerentflammbaren Ausrüstung ab. Enthält keine flammhemmenden Chemikalien.
Alle Informationen: Änderungen und Irrtum vorbehalten. Chargenbedingte Farbabweichungen sind möglich.		

		
Product-specifications	Fields of application	Contract quality
	Material	88 % New Zealand Wool / 12 % Polyamide
	Weight	590 g/m
	Width	140 cm
	Abrasion resistance	100.000 rubs: EN ISO 12947-2 (Martindale)
	Pilling	4-5 scale: 1-5, Max. 5 - EN ISO 12945-2
	Colour fastness to light	5-7 scale: 1-8, Max. 8 - EN ISO 105 - B02
	Colour fastness to rubbing	4-5/4-5 scale: 1-5, Max. 5 - EN ISO 105x12 (wet/dry)
	Cleaning	Dry cleaning ☉
	Flammability	BS 5852 Part 1 - 0 & 1 • BS EN 1021 - 1 & 2 • CA TB 117-2013 • Class Uno UNI 9175 Class 1 EMME • AM 18 • NF D 60-013. Will also pass other flammability standards. Flame retardant performance is dependent upon the foam used and fireproof treatment. Contains no flame retardant chemicals.
All information: subject to change and errors. Consider colour differences between production lots.		

		
Specifications de produit	Application	Collectivité
	Composition	88 % New Zealand Wool / 12 % Polyamide
	Poids	590 g/m
	Largeur	140 cm
	Résistance à l'usure	100.000 tours: EN ISO 12947-2 (Martindale)
	Boulochage	4-5 échelle: 1-5, Max. 5 - EN ISO 12945-2
	Résistance à la lumière	5-7 échelle: 1-8, Max. 8 - EN ISO 105 - B02
	Résistance des couleurs au frottement	4-5/4-5 échelle: 1-5, Max. 5 - EN ISO 105x12 (mouillé/sec)
	Nettoyage	Nettoyage à sec ☉
	Inflammabilité	BS 5852 Part 1 - 0 & 1 • BS EN 1021 - 1 & 2 • CA TB 117-2013 • Class Uno UNI 9175 Class 1 EMME • AM 18 • NF D 60-013. Peut également être conforme à d'autres standards d'inflammabilité. Le niveau de résistance au feu dépend de la mousse utilisée et de l'ignifugation. Contient aucun produit chimique ignifuge.
Toutes les informations: sous réserve de modifications et d'erreurs. Il est possible qu'il y ait une légère différence de couleur d'une production à l'autre.		

